

ELANE

Bar Inventory Manager Scale System

Capacity: 8 lb/3.5 kg

Resolution: 0.01 oz/0.1 g

USER MANUAL



SPECIFICATIONS

| | |
|-----------------------------|---|
| Range | : 8 lb/3.5 kg |
| Accuracy | : 0.01 oz/0.1 g Mechanical overload protection |
| Accuracy | : ± 0.1 % of reading ± 1 digit |
| Resolution | : 0.1g (0.01 oz) |
| Minimum Weight | : >1g (0.5 oz) |
| Min. Add-on Wt. | : >0.1g (0.01 oz) |
| Power Consumption | : Approx 0.35W ~ 0.40W |
| Power | : AC Adaptor – 12V, 200mA (Supplied) USB Power when connected to the computer via USB cable (supplied) Can be operated on 6 x AA batteries for greater portability (not supplied) |
| Warm-up time | : 5 seconds or less |
| Display | : 2 lines with 16 characters dot matrix liquid crystal display and backlighting, with clear protective Plastic Bezel and Yellow LED backlight when using adapter or USB power |
| Warm up display | : Self Test for <5 seconds |
| Temperature | : Good performance within 0 degree C to +40 degree C (32 degree F to 100 degree F) |
| Case & Platform | : Fine texture ABS plastic With steel platform holder |
| Load Cell Technology | : Four element single strain gage with temperature compensation and overload protection. Material: 2024 – T4/T351 Aluminum Alloy |
| Memory | : 1 MB of Flash Memory |
| Interface Ports | : Printer Interface (RS232) Scanner Interface (RS232) Keg Scale Interface (RS232) |
| Interface Cable | : USB cable |
| User Calibration | : Using 50g- weight (supplied) |

TABLE OF CONTENTS

| | |
|---|----|
| SPECIFICATIONS | 2 |
| TABLE OF CONTENTS | 3 |
| NOTES AND INFORMATION – PLEASE READ FIRST | 4 |
| PREPARING THE BAR INVENTORY MANAGER SCALE FOR FIRST USE | 4 |
| OPERATING TEMPERATURE AND ENVIRONMENT | 4 |
| SCALE CALIBRATION | 4 |
| SCALE OVERLOADING | 4 |
| BAR INVENTORY MANAGER SCALE FEATURES..... | 5 |
| KEYBOARD LAYOUT..... | 6 |
| BAR INVENTORY MANAGER SCALE SETUP | 7 |
| MEASURING CONSUMPTION OF STORED RECORDS IN THE BAR USING THE SCALE..... | 10 |
| BAR INVENTORY MANAGER SCALE FUNCTIONS | 12 |
| Entering New Records in the Scale | 12 |
| Adding Quantity to Stock of Existing Records..... | 13 |
| Searching and Displaying a Record by Bar Code or Record Type..... | 13 |
| Displaying Records by Type | 13 |
| Entering New Empty Bottle Weight Record..... | 13 |
| A. Weighing of Empty Bottle/Manual Input of Empty Bottle Weight..... | 13 |
| B. Calculation of Estimated Empty Bottle Weight..... | 13 |
| Searching and Displaying an Empty Bottle Record..... | 14 |
| Measuring Consumption of Liquor Type Records | 14 |
| Measuring Consumption of Other Bottle and Merchandize Type Records..... | 15 |
| Empty Bottle Checkout..... | 15 |
| Deleting Consumption of a Record | 15 |
| Deleting Bar Scale Consumption Records of All Bottles | 15 |
| Deleting All Bottle Records of the Bar Inventory Manager Scale | 15 |
| Determining Specific Gravity | 16 |
| Displaying Consumption Summary by Record Type..... | 16 |
| Displaying Cash Revenue Summary by Record Type | 16 |
| Printing Functions Using the Thermal Printer..... | 16 |
| OTHER DISPLAY AND SETTINGS | 16 |
| Switching from Weighing with Pourer or without Pourer..... | 16 |
| Default Specific Gravity by Bottle Type | 16 |
| Displaying Current Date and Time of the Scale..... | 17 |
| Tare Function | 17 |
| Enabling Keg Scale..... | 17 |
| BAR INVENTORY MANAGER SCALE SOFTWARE UPDATES | 17 |
| OPTIONAL ITEMS..... | 18 |
| WARRANTY | 19 |

NOTES AND INFORMATION – PLEASE READ FIRST

PREPARING THE BAR INVENTORY MANAGER SCALE FOR FIRST USE

- 1) Attach the weighing platform gently to the body of the scale via the four posts, The sloped edge of the platform should face the front part. (**DO NOT** press hard on the platform).
- 2) When using adapter as power source, plug the mains adapter supplied with the scale into the mains and connect it to the output plug to the input socket at the rear side of the scale. It is advisable to remove any batteries on the scale when using adapter. The yellow LED backlight of the scale is always turned on when using adapter.
- 3) When using USB from a PC as power source, the adapter is not necessary so it can be disconnected from the scale. Connect one end of the USB cable (supplied with the scale) to the computer and the other smaller end to the scale. It is also advisable to remove any batteries on the scale when the scale is connected to the computer. The yellow LED backlight of the scale is always turned on when using adapter.
- 4) When using batteries as power source, position the batteries correctly according to the slot in the battery compartment. The yellow LED backlight of the scale is always turned off when using batteries. Use alkaline batteries only.
- 5) Place the scale on a firm and even surface. Press the "**ON/OFF/TARE**" key on the keyboard to start using the Bar Inventory Manager Scale.

Important: Always turn off the scale when switching to a different power source (i.e. from adapter to batteries, from adapter to USB, from USB to adapter, from USB to batteries, from batteries to adapter, from batteries to USB).

OPERATING TEMPERATURE AND ENVIRONMENT

The Bar Inventory Manager Scale is designed to operate in normal room temperatures. If it is subjected to cold or warm temperatures, it should be allowed to reach the room temperature before using. The scale must also be installed on a firm, leveled, and flat surface.

SCALE CALIBRATION

Scale calibration is required once in a while to maintain the scale's accuracy. Calibration must also be done right after receiving the scale from Elane to compensate for any gravitational differences of the scale's origin to its destination.

Use the supplied 50g-weight in calibrating your Bar Inventory Manager Scale. Follow these steps to calibrate your scale:

1. Let the scale warm up for at least 5 minutes.
2. Then press Setup key for about 3 seconds and until "Scale Setup Mode" is displayed on the LCD.
3. Press ENTER key to start user calibration. User will be asked to remove any item on the platform at this point.
4. Put the supplied 50g-weight on the scale platform when the scale asks for it.
5. Wait for the display of successful calibration. Then the scale will exit calibration mode and will go back to Setup mode.
6. Press C/CE key to exit Setup mode and go back to weighing mode.

Note: Pressing C/CE key at any point during the scale calibration will exit calibration mode and will not calibrate your scale.

Please read more on scale technical guides at: http://www.elane.net/index.php?go=tech_guide

SCALE OVERLOADING

OVERLOAD is displayed when the weight on the platform exceeds 3500g (when in gram weight display) or 8lbs/128oz (when in ounce weight display).

BAR INVENTORY MANAGER SCALE FEATURES

Elane Bar Manager Inventory Scale is an intelligent system that determines the number of liquor servings and consumption out of all records entered in a Bar. The updated software version is also able to take inventories of liquors consumed in bottles like beers, sodas and other bar merchandize like cigarettes, snacks that also need to be accounted to the Bar. With its internal database and management function, the total liquor consumption during a bar-tender's shift can be determined by weighing all liquor bottles on the premises (full, open, empty) and use the intelligent software of the scale to summarize all drinks served. This smart scale with its software and accessories is competitively priced against various "toy-like" mechanical scales or counting scales which require a lot of time and manual entries and calculations to assess the results for determination of all drinks consumed in a certain time period. The scale electronics is most accurate and sophisticated electronic system using a 20-bit AD conversion, powerful 8-bit Microprocessor, surface mount components, high quality temperature compensated load cell and 2 lines of 16 digits each backlit dot-matrix LCD display.

The useful and profitable features of the scale include:

- ◆ Measures consumption and calculates number of drinks served out of all liquor bottle records in the bar by weighing of all opened bottles after a bar tender's shift or at any time interval desired to take inventory of liquor drinks
- ◆ Records consumption of other bar merchandize by input of current stock of this merchandize
- ◆ Stores bar records of different types – Liquor, Wine Bottles, Alcoholic, and Non-alcoholic Bottles which are useful to use in measuring consumption and taking inventory of consumed drinks
- ◆ Stores empty bottle weight (tare weight) records of different liquor brands
- ◆ Stores records for other bar merchandize for stock and inventory purposes
- ◆ Takes inventory of liquors consumed in bottles (i.e. beers, sodas, etc.) by manual input of number of bottles left in bar
- ◆ Takes inventory of other bar merchandize (i.e. packs of cigarettes, snacks, etc.) by manual input of number of bottles left in bar
- ◆ Provides search/view of all stored records and calculated data using the Search and Summary Display keys which in turn can be printed in the thermal printer for further review and analysis
- ◆ Provides summary of current liquor bottles in the system – by liquor brand or by bottle type
- ◆ Provides summary of consumed liquor bottles in the system – by liquor brand or by bottle type
- ◆ Provides summary of consumed merchandize or other items in the bar
- ◆ Automatically enters missing empty bottle weight (tare weight) upon check out of an empty bottle to complete the record for the particular brand of liquor
- ◆ Calculates specific gravity using full bottle weight, empty bottle weight, and full bottle content information of the specified liquor
- ◆ Programmable pourer weight – can be preset to determine the weight of the pourer – so there is no need to remove the pourer on a bottle with partial contents during inventory checking
- ◆ Programmable drink size (serving or shot size) to display consumed or remaining liquor by number of drinks or servings
- ◆ Programmable Bar ID – allows the scale be used in several bars for storing bottle records and taking inventories
- ◆ Programmable drink prices for premium, standard, and beer drinks which is useful when liquor serving price is categorized by these types
- ◆ Has a unique Setup Menu to initially program the scale for its location and provides ways of setting the units of measurement, time and date format, and other important scale settings
- ◆ The optional Bar Inventory Manager Scale Application Program is an easy to use computer application and provides more detailed reports and statistical analysis of the Bar Operations. It also provides a more convenient way to edit liquor bottle records and synchronize it with the Bar Inventory Manager Scale.
- ◆ Interface program which connects the scale to a PC via USB. It can download data from the PC and send data to the PC for permanent records, back-up and further analysis. Edited data on the PC can be synchronized back to the scale
- ◆ Interface program can load master list of liquor bottle and empty liquor bottle records in Excel file making it easier to add and edit records to load into the scale memory
- ◆ Can use optional barcode scanner to identify a liquor brand on the scale and transfer weight data automatically into the scale's database
- ◆ The optional data printer provides quick reports of weighing, consumption summaries and other important details, output or information from the bar
- ◆ Can use optional 70kg/150lb external platform (keg scale) to manage Beer Kegs with automatic switching to Beer Keg mode once the Keg Scale is turned on
- ◆ With the unit, we supply a calibration weight and user calibration software is included in the scale to compensate for different gravity values at its location and to check if the scale is in perfect condition
- ◆ With its USB connectivity, software updates can be downloaded from the PC into the scale
- ◆ Scale functions as a normal weighing scale when in default mode

The Bar Inventory Manager Scale is a sophisticated data management for use in bars. Its application is to monitor the change in weight of different kind of beverages in the bar. From this change in weight we can determine how much drinks were served and ultimately the equivalent cash can be calculated. So in short it is used to monitor the use or misuse of the drinks in the bar without direct personal supervision.

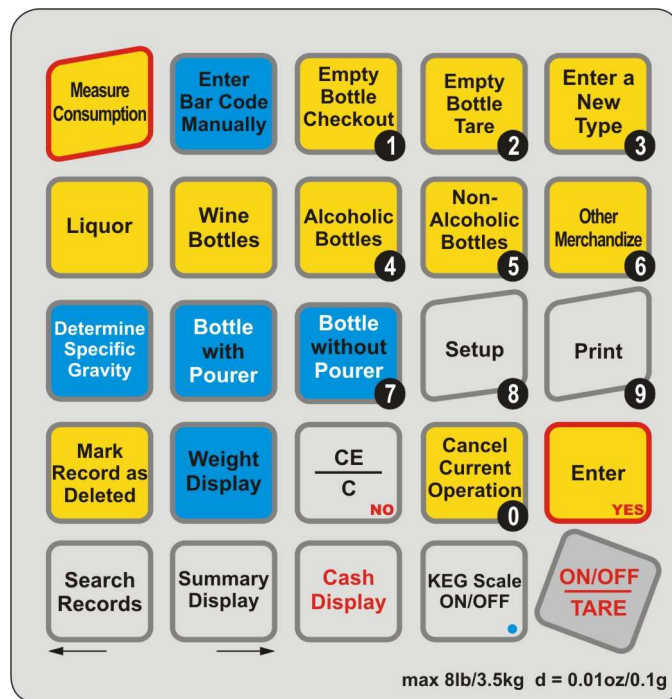
The system program with its optional PC based software acts as complete monitoring system. Basically the system can calculate the number of drinks poured in a certain shift or time period and accurately predict the cash register contents and provides many statistical data. The stand-alone scale without PC program can distinguish between standard and premium priced drinks.

Databases are employed to have fast access to all data of liquor brands in stock and through the scanning of barcode any bottle can be positively identified.

New liquor brands can be put into the bar and are automatically registered and assessed and the contents of the empty bottle are automatically entered as “consumed” into the database and the remaining poured drinks are automatically added to the quantity of consumed drinks in the database.

The updated software version also allows input of records for liquors and drinks that are consumed in bottles as well as for other bar merchandize that are consumed by piece. The scale can be used to manage stock and inventory of almost all bar items.

KEYBOARD LAYOUT



BAR INVENTORY MANAGER SCALE SETUP

The Bar Inventory Manager Scale has to be setup according to user's preferences of weight units, time format, drink prices, pourer weight, drink size settings, and others. There are also several functions for Bar ID programming and data deletion in Setup mode.

To enter Setup Mode, press Setup key for about 3 seconds and until "Scale Setup Mode" is displayed on the LCD. Then press one of the following keys to:

1 – Change unit of weight and measurement to use in scale – Standard (oz/fl oz) or Metric (gram/ml)

1. Press 1 to switch to standard units (ounce and fluid ounce will be used for weight and volume measurements respectively) or 2 to switch to metric units (gram and milliliter will be used for weight and volume measurements respectively).
2. The new setting selected will take effect in the scale.

2 – Set Pourer Weight

1. Place the new (dry) pourer on the scale to get the weight or press Enter key to manually input the pourer weight. If weighing the pourer, the scale will automatically save the new pourer weight once the weight on the platform becomes stable. If weight is manually entered, press Enter key to confirm the entry and save this pourer weight.

3 – Set Drink Size****

1. Input the new drink size and press Enter key to confirm the new value.
2. The scale will save the new drink size setting and will be used for bar inventory.

****The default drink size for the Bar Manager Scale is 1.50 fl oz (44.4 ml).

4 – Set Prices

1. Press 1 to set price for Premium drinks, 2 for Standard drinks, and 3 for Beer drinks.
2. The current drink price is displayed on the lower left part of the LCD.
3. Input the new price and press Enter key to confirm

6 – Delete Current Consumption Data

When the current consumption data has been viewed or downloaded to Bar Inventory Manager Application Program, it can be deleted to refresh records of consumption. This function is useful to calculate another batch of liquor consumption (i.e. measure consumption after every shift). Make sure that previous consumption data has been printed and has been synchronized with the PC Program (if using this tool).

1. Press Enter key to confirm deletion of current consumption data or CE key to cancel deletion.
2. The scale will prompt for successful deletion of consumption data if user continues with the deletion.

7 – Delete ALL Stored Records in the Scale

There might be a need for the user to delete all stored records (including programmed drink size, pourer weight, and drink prices).

1. Press Enter key to confirm deletion of ALL stored records (including empty bottle records) or CE key to cancel deletion.
2. The scale will prompt for successful deletion of all data if user continues with the deletion.

8 – Setup Bar ID

Bar ID of the scale identifies which of your bar (if using one scale for multiple bars) has records that are programmed in the scale. Once you synchronize scale records in the PC Program, the later will be able to match these records to the programmed scale records according to the Bar ID. Make notes in assigning Bar IDs to the scale (example: Bar ID 001 for Joe's Bar, Bar ID 002 for Sam's Bar, etc.). To setup scale's bar ID, please follow these steps:

1. Enter the 3-digit Bar ID of the bar to program its records. Example: press 001 for Bar ID 1 or press 018 for Bar ID 18.
2. Press Enter key to confirm.

9 – Set Scale Date and Time

There might be a need to change the current date and time settings of the scale when used in area with different time zone than before.

1. Input current year then press Enter key.
2. Input current month then press Enter key.
3. Input current date then press Enter key.
4. Input current time in hours then press Enter key. At this point, the 24-hour format is used for input. So when the time is 3:00 PM, enter 15 as the time in hours.

5. Input current time in minutes then press Enter key.
6. Input current time in seconds then press Enter key.
7. The new time settings will take effect in the scale.

Example: To change the current date to August 9, 2008, 1:11:12 PM, do the following:

1. Input 2008 (year) then press Enter key.
2. Input 8 (month) then press Enter key.
3. Input 9 (date) then press Enter key.
4. Input 13 (time in hours) then press Enter key.
5. Input 11 (time in minutes) then press Enter key.
6. Input 12 (time in seconds) then press Enter key. The new time settings will take effect in the scale.

ENTER – User Calibration

Refer to the previous instructions on how to calibrate the Bar Inventory Manager Scale using the supplied 50-gram weight (see SCALE CALIBRATION section above).

Note: Settings 1-9 and User Calibration can only be achieved when the scale is in Setup Mode (as described above). Press CE/C key or Cancel Operation key to exit Setup mode anytime and return to scale normal weighing mode.

SETTING UP RECORDS IN THE BAR INVENTORY MANAGER SCALE

The very first thing to do in the Bar Inventory Manager Scale after programming scale settings is to setup records of liquor and bottle brands as well as other bar merchandize which will be served in the bar. The scale will save all the necessary information to perform different bar operations like inventory, summarizing of liquor brands, synchronizing with the Bar Manager PC Program and other bar operations.

Entered records can be reviewed by browsing or searching for liquor brands using bar code or the liquor brand type assigned to the newly recorded bottle. If the Bar Inventory Manager Scale is used along with the thermal printer, the details can also be printed for paper recording purposes. Once a record is saved for a liquor brand, its existing information will be used in adding new bottles of this brand to bar (i.e. adding new bottle quantity of the same brand to the bar inventory). It can be edited if there are changes in the information of this brand (like bottle category) or can be deleted if the brand will no longer be available in the entire bar operation.

The following diagram illustrates how to setup records in the Bar Inventory Manager Scale. More detailed instructions are also available in **FUNCTIONS** section of this user manual.

Setting up bar records can also be done in the Bar Manager PC Program and then synchronized with the scale. There are options to add new records one by one or load several records from an Excel list. The scale can also be setup to work with multiple bars by assigning Bar ID to the scale.

If you have edited data in the scale or PC Program, it is advisable to synchronize the data at once so that any new brands or records, empty bottle or tare weights, and other data will be available in the scale.

Please refer to the following flowchart diagram for summary on saving new records of bottles or merchandize in the scale.

Store Preliminary Records of your Bar in the Bar Inventory Manager Scale

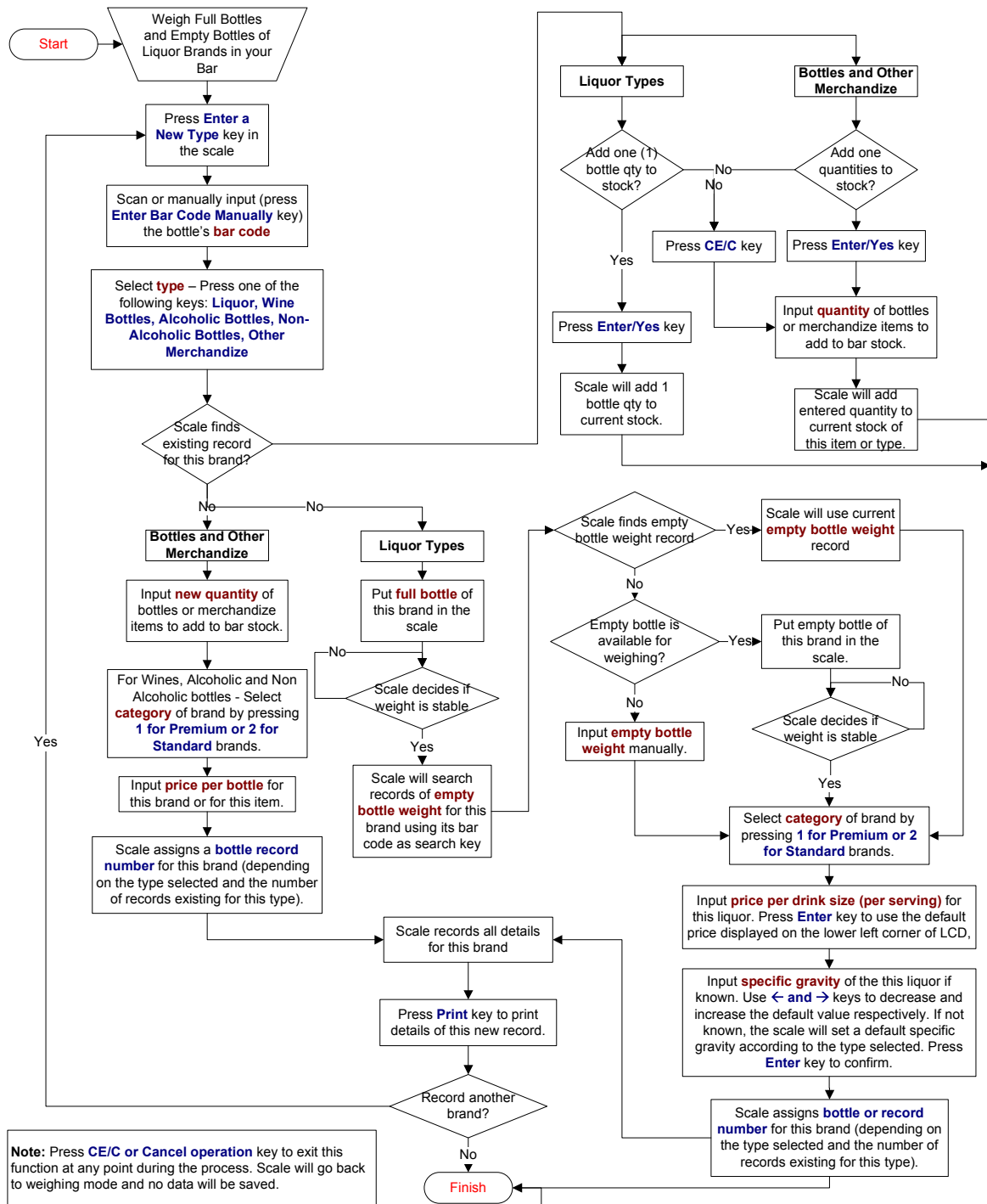


Fig. 1

MEASURING CONSUMPTION OF STORED RECORDS IN THE BAR USING THE SCALE

The Bar Inventory Manager Scale can measure consumption after a certain period of time (as user may wish to do so) to calculate revenues, consumed drinks and bottles, and assess bar inventory (remaining drinks and bottle and item quantities in stock).

The record to measure its consumption must have its information saved in the scale first. Once the scale determines the weight of the consumed bottle or has the data to calculate consumption, it is able to determine how many drinks or items are consumed for that particular record. It is also able to compute revenues generated out of this consumption and compute for the new bar stock for this brand. This information can be printed out immediately on the location for further analysis of the bar operations (i.e. determine if there is any missing money in the bar).

Please refer to the following flowchart diagram for summary on how to measure consumption out of the liquor, bottles or other merchandize records in the Bar Inventory Manager Scale. More detailed instructions are also available in **FUNCTIONS** section of this user manual.

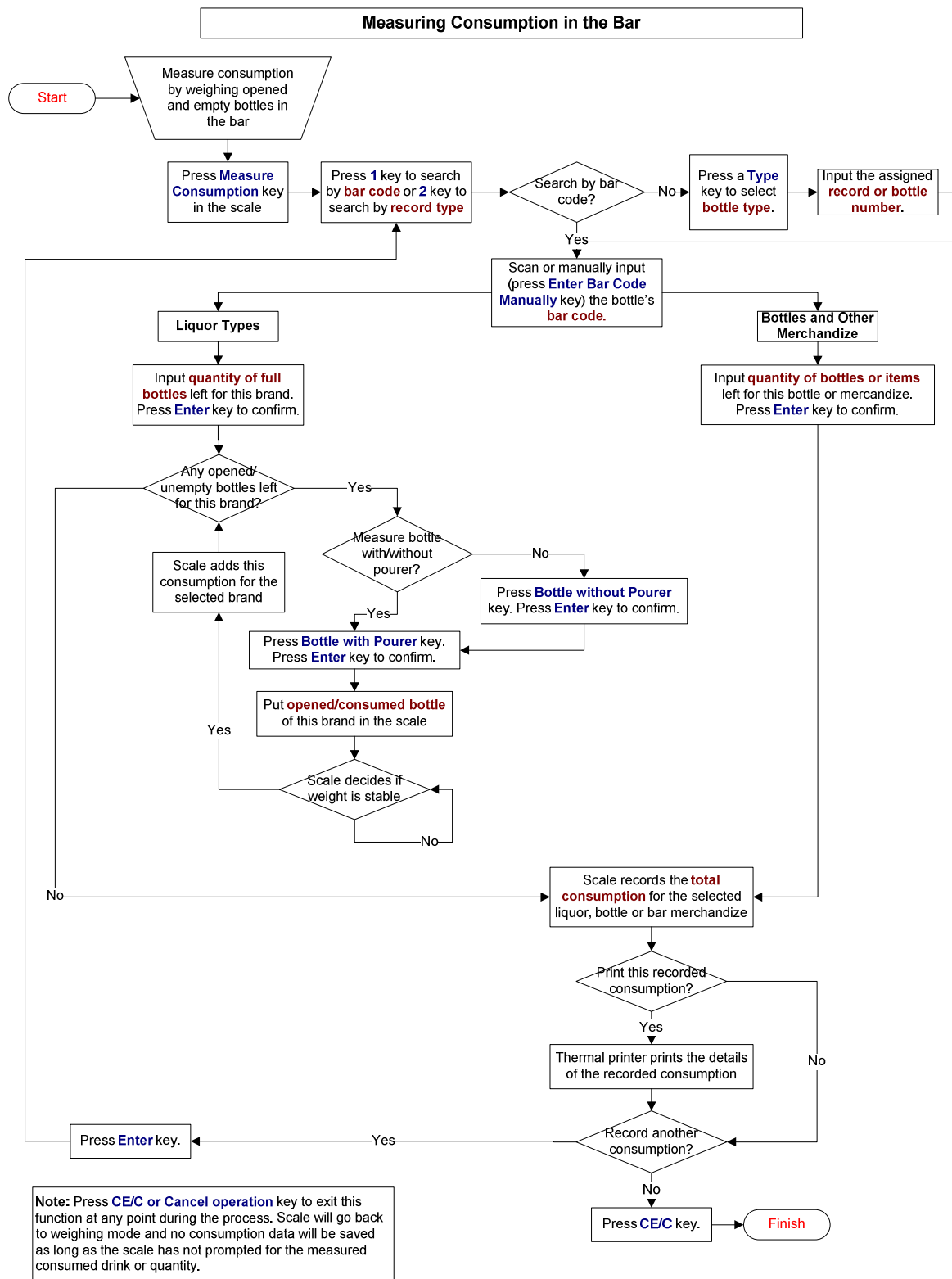


Fig. 2

BAR INVENTORY MANAGER SCALE FUNCTIONS

Entering New Records in the Scale

New Liquor Brands – Liquor types are those bottle brands that are consumed in bar by serving or drink size. Here are the steps to record a new liquor brand for the first time in the Bar Inventory Manager Scale:

1. Press Enter a New Type key.
2. Scan the bar code of the new bottle using the bar code scanner or press Enter Bar Code Manually key to manually input the bar code.
3. Select record type Liquor by pressing Liquor key.
4. Place the full bottle on the scale platform to record the full bottle weight (bottle + content weight). Once the weight is stable, the scale will record the weight automatically.
5. Place an empty bottle of this brand on the scale platform to record the empty bottle weight. In the absence of an empty bottle, the weight can be manually entered if known or once empty bottle checkout is performed on this bottle. Once there is a record of empty bottle weight for this new drink type, the scale will no longer ask for the empty bottle weight.
6. Select bottle category by pressing 1 for Premium or 2 for Standard.
7. Input the price per drink size of this liquor brand. The default price will be shown on the lower left part of the LCD depending on whether this brand was set as Premium or Standard drink in the previous step. Press Enter key to confirm.
8. Input the specific gravity** of this liquor brand if known. The default specific gravity of the bottle type selected is displayed. Use keys ← to decrease the default value or → to increase the default value. If no value is entered, the scale will use a default specific gravity value according to the bottle type selected. Press Enter key to confirm the value. A partial list of specific gravity values can be found in http://www.bar-manager.com/index.php?go=specific_gravity.
9. The scale automatically saves all the above information for this bottle and assigns a record number according to the bottle type selected and the number of records existing for this bottle type (i.e. Liquor 001 for the first recorded Liquor type).
10. Press Print key to print the newly added bottle record.
11. After this, the scale will go back to its normal mode. Repeat the entire steps from Step 1 to enter another new record in the Bar Inventory Manager Scale.

**The scale has default specific gravity values for each of the bottle types. These values are only estimations. It is still best to know the exact specific gravity value of the liquor. Refer to the latter section of the user manual on these default values.

New Bottles – Bottle types Wine, Alcoholic or Non-Alcoholic bottles are those brands that are consumed in bar by bottle.

Here are the steps to enter a new brand for the first time in the Bar Inventory Manager Scale:

1. Press Enter a New Type key.
2. Scan the bar code of the new bottle using the bar code scanner or press Enter Bar Code Manually key to manually input the bar code.
3. Select record type by pressing one of the following keys: Wine Bottles, Alcoholic Bottles, or Non Alcoholic Bottles.
4. Input new bottle quantity to be added as stock to bar. For Wine Bottles, they can be entered in fractions of tenths of a bottle (i.e. 3.5 for 3 and a half of a bottle). For Alcoholic or Non Alcoholic Bottles, they must be entered as whole numbers. These bottle types are fully consumed by single bottle (e.g. beer bottles, sodas, etc). Press Enter key to confirm.
5. Select bottle category by pressing 1 for Premium or 2 for Standard.
6. Input the price per bottle of this brand. Press Enter key to confirm.
7. The scale automatically saves all the above information for this bottle and assigns a record number according to the bottle type selected and the number of records existing for this bottle type (i.e. Wine Bottles 001 for the first recorded Wine Bottles type).
8. Press Print key to print the newly added bottle record.
9. After this, the scale will go back to its normal mode. Repeat the entire steps from Step 1 to enter another new record in the Bar Inventory Manager Scale.

New Other Bar Items or Merchandize – This type can include all other consumable products in the bar like packs of cigarettes, snacks, and other items. These items are consumed by piece.

Here are the steps to enter a new brand of item or merchandize for the first time in the Bar Inventory Manager Scale:

1. Press Enter a New Type key.
2. Scan the bar code of the new item using the bar code scanner or press Enter Bar Code Manually key to manually input the bar code.
3. Select Other Merchandize as type for this item.

4. Input new quantity of this item to be added as stock to bar. The quantity must be entered in whole numbers. Press Enter key to confirm.
5. Input the price per item (or per piece) of this merchandize. Press Enter key to confirm.
6. The scale automatically saves all the above information for this merchandize and assigns a record number according to the number of records existing for this merchandize items (i.e. Merchandize 001 for the first recorded Merchandize type).
7. Press Print key to print the newly added record.
8. After this, the scale will go back to its normal mode. Repeat the entire steps from Step 1 to enter another new record in the Bar Inventory Manager Scale.

Adding Quantity to Stock of Existing Records

Quantity can be added to existing stock of records after entering record information in the scale .

1. Press To Bar/New Type key.
2. Scan the bar code of the record using the bar code scanner or press Enter Bar Code Manually key to manually input the bar code.
3. If the record is already in the scale, it will prompt user if he wants to add this bottle quantity (equivalent to one bottle quantity) to the current stock. For Wines, Alcoholic, Non-Alcoholic Bottles, and Other Merchandize records input the quantity to add to bar stock. Press Enter key to confirm.
4. The quantity will be added to the current stock of this record.

Searching and Displaying a Record by Bar Code or Record Type

1. Press Search Records key.
2. Press 1 to search for a specific bar record.
3. Press 1 to search by bar code or press 2 to search by bottle type.
4. To search by bar code, scan the bar code to search using the bar code scanner or press Enter Bar Code Manually key to input manually the bar code. The scale will display details once a matching record is found.
5. To search by record type, press one of the record type keys. Then input the record number of the bottle or merchandize to find (i.e. Press Liquor then enter 001 for Liquor 001). The scale will display details once a matching record is found.
6. Press Enter key to display additional details of this record. The following keys can also be pressed to perform their corresponding function on the record: Measure Consumption, Empty Bottle Checkout, Mark Record as Deleted, and Print keys.
7. Press CE/C or Cancel Operation key to exit search and display of records.

Displaying Records by Type

1. Press the type key of the records to display (e.g. Liquor, Wine Bottles).
2. The scale will display the first record of the type selected if a record is found.
3. Press → to display the next record or ← to display the previous record of this type. When the scale already encounters the last record, it will display the first record again.
4. Press Enter key to display additional details of this record. The following keys can also be pressed to perform their corresponding function on the record: Measure Consumption, Empty Bottle Checkout, Mark Record as Deleted, and Print keys.
5. Press CE/C or Cancel Operation key to exit search and display of records.

Entering New Empty Bottle Weight Record

Recording of empty bottle weights (tare weights) can be done in two ways: a) weigh empty bottle if available or input empty bottle weight if known, b) calculation of estimated empty bottle weight by weighing full bottle, providing the specific gravity, and providing the total contents of the bottle.

A. Weighing of Empty Bottle/Manual Input of Empty Bottle Weight

Here are the steps to record empty bottle weight in the Bar Manager Scale. Empty bottle weights are needed to determine the actual weight of the liquor and the number of drink servings that can be generated out of a full bottle.

1. Press Empty Bottle Tare.
2. Scan the bar code of the record to delete its consumption using the bar code scanner or press Enter Bar Code Manually key to input manually the bar code.
3. Press Yes to weigh an available empty bottle.
4. Place the empty bottle on the scale platform to record the empty bottle weight. In the absence of an empty bottle, the weight can be manually entered if known. Press Enter key to manually enter the empty bottle weight.
5. The scale will record the weight automatically once the empty bottle weight becomes stable.

B. Calculation of Estimated Empty Bottle Weight

Here are the steps for the scale to calculate estimated bottle weight. Full bottle (unopened) should be available for weighing and the specific gravity of the liquor should also be known (but can be defaulted to the specific gravity according to the type of the bottle selected).

1. Press Empty Bottle Tare.
2. Scan the bar code of the record to delete its consumption using the bar code scanner or press Enter Bar Code Manually key to input manually the bar code.
3. Press No to get the empty bottle weight by weighing the full bottle.
4. Place the full (unopened) bottle on the scale. Wait for the weight to become stable.
5. Input the specific gravity** of this liquor if known. The default specific gravity of the bottle type selected is displayed. Use keys ← to decrease the default value or → to increase the default value. If no value is entered, the scale will use a default specific gravity value according to the bottle type selected. But this will not guarantee the accuracy of the estimated bottle weight since the specific gravity of the liquor may not be its real specific gravity. Press Enter key to confirm the value.
6. Input the full bottle contents based from its label. Press 1 to input in fluid ounce or 2 to input in milliliters.
7. The scale will calculate estimated empty bottle weight by subtracting the bottle's volume weight from the full bottle weight and will automatically record this estimated empty bottle weight.

**The scale has default specific gravity values for each of the bottle types. These values are only estimations. It is still best to know the exact specific gravity value of the liquor. Refer to the latter section of the user manual on these default values.

Searching and Displaying an Empty Bottle Record

1. Press Search Records key.
2. Press 2 to search for a specific empty bottle record.
3. Scan the bar code to search using the bar code scanner or press Enter Bar Code Manually key to input manually the bar code. The scale will display details once a matching record is found.
4. Press Print key to print details of this record in the thermal printer.
5. Press CE/C key to exit search and display of empty bottle records.

Measuring Consumption of Liquor Type Records

Here are the steps to measure liquor consumption in the Bar Manager Scale:

1. Press Measure Consumption key.
2. Press 1 to input liquor bottle by bar code or 2 to input by bottle type.
3. To input by bar code, scan the bar code of the record to delete its consumption using the bar code scanner or press Enter Bar Code Manually key to input manually the bar code.
4. To input by record type, press Liquor key and then input the assigned record number for this liquor brand (001 to 255).
5. Input quantity of full/unopened bottles left for this liquor brand ***.
6. The scale will ask if there are opened bottles (but not empty) left for this liquor brand. Press Yes if there are opened bottles or No if there are no more opened bottles left for this liquor brand.
7. If there are still opened bottles, the scale will weigh the bottles to record corresponding consumption.
8. The scale will prompt if this bottle will be weighed with or without pourer. Press Bottle with Pourer or Bottle without Pourer key to switch between with pourer and without pourer weighing respectively.
9. Press Enter key to confirm the selected setting.
10. Place one opened bottle of this liquor brand in the scale and once the weight becomes stable, the scale will automatically add this consumption for the selected record.
11. The scale will ask if there are other opened bottles for weighing. Press Yes key if there is still an opened bottle and repeat steps starting from #8 until all opened bottles are already weighed for recording consumption.
12. If there are no more opened bottles left, press No key.
13. Proceed to empty bottle checkout if there are empty bottles to checkout for this liquor brand. Please refer to the succeeding section of Empty Bottle Checkout for complete details on how to do this step.
14. The scale will record this total measured consumption for the selected liquor brand after weighing of all opened bottles.
15. The scale will prompt user to print the details of the newly measured drink consumption. Press Yes key to print or No key to cancel printing.
16. The scale will prompt user to measure another batch of consumption. Press Yes key to measure again or No key to exit Measure Consumption process.

***Full or unopened bottles should be accounted on the Bar Manager Scale inventory (i.e. recorded/added as new Bottle). Refer to the section on Adding Quantity to Stock of Existing Records for this. If the entered quantity is not accounted on the Bar Manager Scale inventory, the scale cannot record the consumption.

The scale cannot record liquor consumption under the following conditions:

1. There is no record of the selected liquor brand in the Bar Inventory Manager Scale.

2. There are no more stocks available for this liquor brand (all bottles for this brand were already consumed and recorded in the scale).
3. Current stock is less than total measured consumption because of unaccounted full bottles entered or incorrect weighing of opened bottles during measure of consumption for this liquor brand

Measuring Consumption of Other Bottle and Merchandize Type Records

Here are the steps to measure liquor consumption in the Bar Manager Scale:

1. Press Measure Consumption key.
2. Press 1 to input liquor bottle by bar code or 2 to input by bottle type.
3. To input by bar code, scan the bar code of the record to delete its consumption using the bar code scanner or press Enter Bar Code Manually key to input manually the bar code.
4. To input by record type, press Wine Bottles, Alcoholic Bottles, Non-Alcoholic Bottles, or Other Merchandize key and then input the assigned record number for this liquor brand (001 to 255).
5. Input the current quantity left for this record. For Wine Bottles, they can be entered in fractions of tenths of a bottle (i.e. 3.5 for 3 and a half of a bottle). For Alcoholic Bottles, Non Alcoholic Bottles, or Other Merchandize, they must be entered as whole numbers.
6. The scale will calculate the consumption for this record based from the current quantity input.
7. The scale will prompt user to print the details of the newly recorded consumption. Press Yes key to print or No key to cancel printing.
8. The scale will prompt user to measure another batch of consumption. Press Yes key to measure again or No key to exit Measure Consumption process.

Empty Bottle Checkout

Empty bottle checkout function is used to check and record empty bottles that were consumed for the selected liquor brand. This step ensures that only empty bottles are checked out from the bar.

1. Press Empty Bottle Checkout key.
2. Scan the bar code to search using the bar code scanner or press Enter Bar Code Manually key to input manually the bar code.
3. Place empty bottle for check out on the scale platform.
4. The scale will check the empty weight automatically once the weight becomes stable.
5. The empty bottle will be checked out if bottle is considered as "empty" (i.e. the weight is within the defined range of empty bottle for this record).

Deleting Consumption of a Record

Current consumption of a record can be deleted to empty out the consumption.

1. Press Mark Record as Deleted key.
2. Scan the bar code of the record to delete its consumption using the bar code scanner or press Enter Bar Code Manually key to input manually the bar code.
3. User will be asked to confirm deletion of consumption. Confirm by pressing Yes key. Press No key to cancel deletion of this record.

Deleting Bar Scale Consumption Records of All Bottles

Here are the steps to delete the current consumption records of all bottles (all liquor brands) in the Inventory Bar Manager Scale. You are most likely to delete bar consumption records when you want to refresh the data of consumption records (after printing out the latest consumption or recording it on a log book, or after downloading to the Bar Inventory Manager PC Program and archiving it).

1. Press Setup key for about 3 seconds and until "Scale Setup Mode" is displayed on the LCD.
2. Press 6 to delete the current consumption records of the Bar Inventory Manager Scale.
3. Confirm by pressing Enter key to delete such records or press CE/C key to cancel deletion of consumption records.
4. Once deletion is confirmed, consumption records in the scale will be deleted.
5. The scale will go back to Setup mode.
6. Press CE/C key to exit Setup mode and go back to Normal mode.

Deleting All Bottle Records of the Bar Inventory Manager Scale

Here are the steps to delete all bottle records saved in the Bar Inventory Manager Scale. These records include all recorded new types of bottles and empty bottle weights.

1. Press Setup key for about 3 seconds and until "Scale Setup Mode" is displayed on the LCD.
2. Press 7 to delete all bottle records of the Bar Inventory Manager Scale.
3. Confirm by pressing Enter key to delete such records or press CE/C key to cancel deletion of all bottle records.
4. Once deletion is confirmed, all bottle records of scale will be deleted.
5. The scale will go back to Setup mode.
6. Press CE/C key to exit Setup mode and go back to Normal mode.

Determining Specific Gravity

Specific gravity of liquor can be estimated by weighing its full bottle and empty bottle and then input of full bottle contents. Follow these steps to get an estimated specific gravity for a certain liquor brand.

1. Press Determine Specific Gravity key.
2. Place full bottle of this liquor on the scale.
3. Place empty bottle of this liquor on the scale.
4. Input full bottle contents according to its label. Press 1 to input in fluid ounce or 2 to input in milliliters.
5. The computed specific gravity estimate will be displayed and the scale will prompt to print this value. Press Yes to continue to print or No to cancel printing.
6. The scale will prompt to enter the bar code of this liquor. Press Yes key to scan or manually enter the bar code or No key to continue printing without the bar code.

Displaying Consumption Summary by Record Type

Press Summary Display key to display consumption summary by record type. The scale will display consumption of Liquors (in ml), Wine Bottles, Alcoholic Bottles, and Non Alcoholic Bottles (in number bottles), and Other Merchandize (in pieces) respectively.

Displaying Cash Revenue Summary by Record Type

Press Cash Display key to display cash revenue summary by record type. The scale will display revenues generated out of Liquors, Wine Bottles, Alcoholic Bottles, and Non Alcoholic Bottles, and Other Merchandize respectively.

Printing Functions Using the Thermal Printer

Several printing options can be selected by pressing the Print key. After pressing Print key, press one of the following keys to:

- 1 – Print empty bottle checkout report of all Liquor records in the scale
 - 2 – Print all records of empty bottles in the scale (Press Enter key to confirm printing of all records)
 - 3 – Print consumption report of all records in the scale (Press Enter key to confirm printing of all records)
 - 4 – Print all records in the scale except empty bottle records (Press Enter key to confirm printing of all records)
 - 5 – Print all records by type (Select type by pressing Liquor, Wine Bottles, Alcoholic Bottles, Non-Alcoholic Bottles, or Other Merchandize key)
 - 6 – Print stock report of all records in the scale (Press Enter key to confirm printing of all records)
 - 7 – Print stock report by record type (Select type by pressing Liquor, Wine Bottles, Alcoholic Bottles, Non-Alcoholic Bottles, or Other Merchandize key)
 - 8 – Print current scale settings
- Summary Display – Print summary of consumption by record type
Cash Display – Print summary of cash revenue generated out of the consumption by record type
Weight Display – Print current weight reading as displayed on the scale

Other ways to print when the following functions are in use:

Search Records – Press Print key to print the details of the searched record during search of bar records or empty bottle records.

Functions where user is prompted "Print" function – Press Print key or Enter key to continue printing the selected information. Press CE/C key or any other key to cancel printing.

Note: To exit current function or process without saving any data or information, press CE/C key or Cancel Operation (except during input of values since this key shares with 0 key) until the scale goes back to weighing mode.

OTHER DISPLAY AND SETTINGS

Switching from Weighing with Pourer or without Pourer

Press Bottle with Pourer or Bottle without Pourer key to change the current setting (with pourer or without pourer). The new setting will be saved even after turning off the scale.

Default Specific Gravity by Bottle Type

The default specific gravity (specific weight) for Liquor is set to 1.00 g/ml. When required to input specific gravity, the default value can be used by pressing Enter key to accept displayed default value or the default value can be changed accordingly. The value can be decreased (←) or increased (→) and confirmed with Enter key.

Displaying Current Date and Time of the Scale

Press CE/C key when in normal weighing mode to show the current date and time that is set on the scale.

Tare Function

Press On/Off key to tare the weight on the scale platform. This will zero out the weight on the scale. After removing the item, the scale will display negative weight. Press On/Off key again to return to zero weight.

Enabling Keg Scale

Press Keg Scale On/Off key enable keg scale weighing. This function will only be enabled when the keg scale is connected to the scale. Press this key again to disable keg scale weighing.

BAR INVENTORY MANAGER SCALE SOFTWARE UPDATES

Bar Inventory Manager Scale software updates are provided to eligible customers (within warranty) so they can update their scales with the latest software from Elane. These updates will not delete existing data that users have stored in their Bar Inventory Manager Scale. To avail of the updates, users must first register their scales using the registration form located at: http://www.bar-manager.com/index.php?go=registration_form.

OPTIONAL ITEMS

1) Barcode Scanner

The barcode scanner is plug directly into the Bar Inventory Manager Scale and is used to instantly identify a bottle by reading its UPC or EAN code. This shortens the time for bar code input and also lessens errors caused by manual input of barcodes.



2) Bar Inventory Manager Application Program

The PC Management Software is an easy to use Management program which will download the collected data of the scale. Since the scale can be battery operated, the PC does not need to be near the bar. The Bar Inventory Manager PC software and its database will store all data and allow editing of data and prices. It also allows easy input of new brands, back up and maintenance of the scale's internal data base. Additional reporting functions and statistical function with print out and export to other programs make this a very cost effective and simple complete Bar Management System. The PC program can also be updated via the internet once newer version or more UPC/EAN data are from our data base. If the Bar Inventory Manager Application program is ordered with the scale, we will ship along a free USB cable.

3) Thermal Printer for Data Printing

The printer is attached directly to the scale. It is useful and practical to print the measurement transactions as they occur, or print a complete record of the consumed drinks or a detailed report of the consumed drinks of the scale's database. Other reports can be printed from the printer (refer to the above section on Using the Print function).



SPECIFICATIONS:

Type: Thermal Printer

Paper Width: 58mm

Paper Diameter Max: 50mm

Print Speed: 40mm/s

Interface: Serial Port to connect to Bar Inventory Manager Scale

Print Head Lifetime: 50km

4) Beer Keg Scale

The floor based beer keg scale with 70kg (150lb) capacity is connected to the Bar Inventory Manager Scale with an interface cable which also provides power to the remote scale. Once a beer keg is placed on the floor scale the Bar Inventory Manager Scale will automatically recognize the presence

of the beer keg and switches automatically to the "BEER KEG MODE". The data is then added to the drink consumption data base.

WARRANTY

One (1) year from date of sale to end-user against defect in manufacturing and materials

One (1) year free software updates by remote download or free download offered by ELANE for as long as you own the product if we discover significant technical improvements