

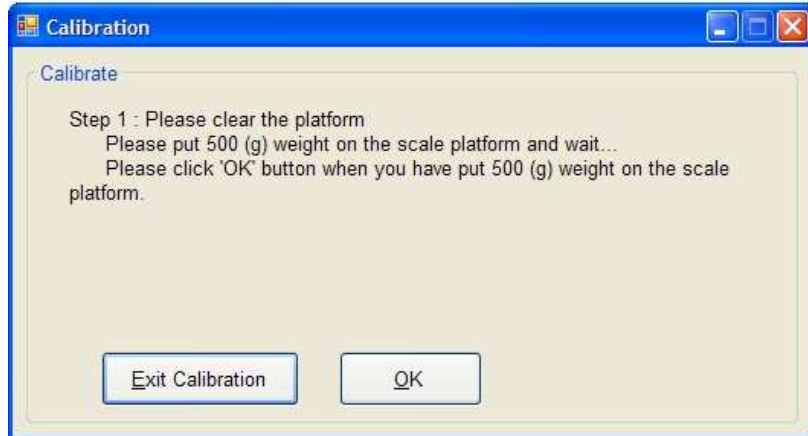
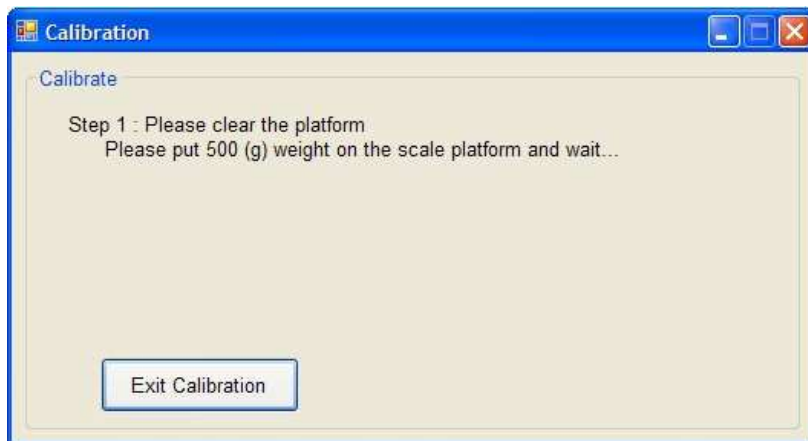
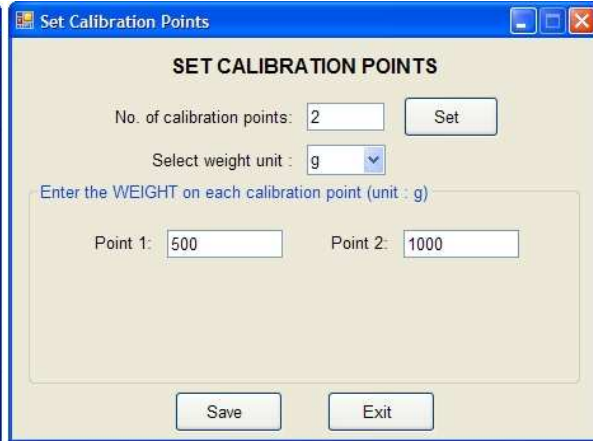
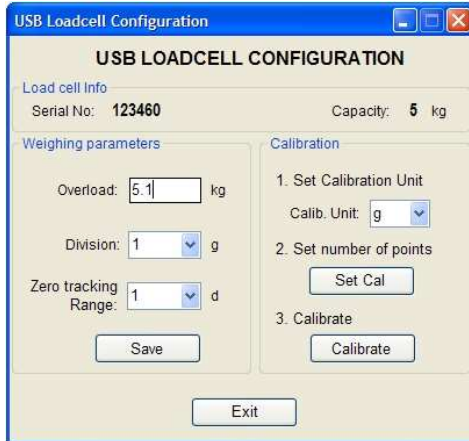
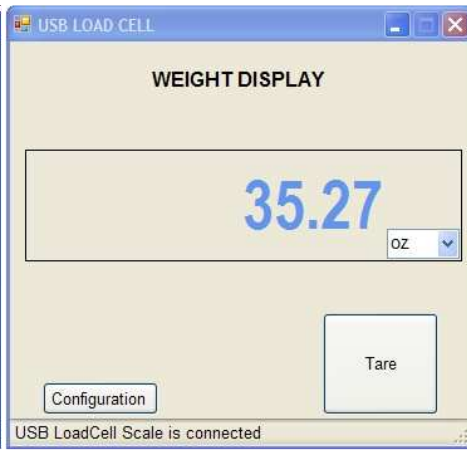
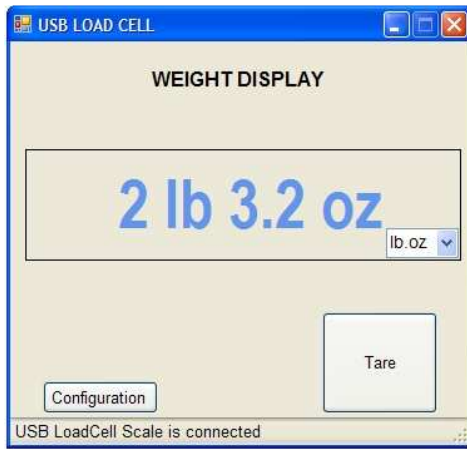


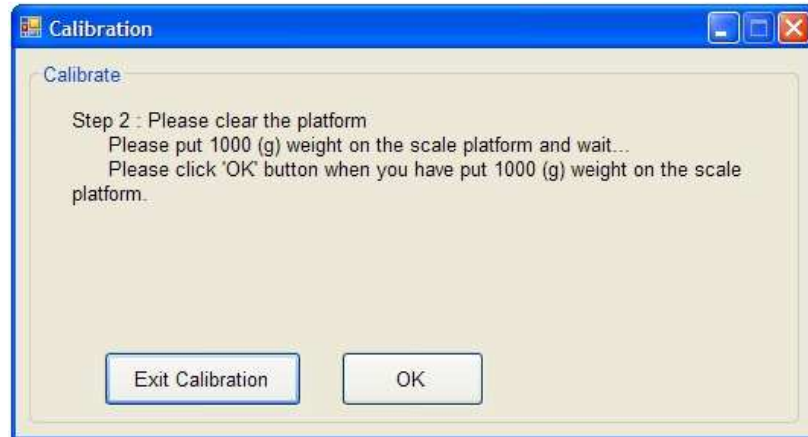
USB Load Cell PC Program (Optional)

Features:

- Display weight in Gram, Kilogram, Pound, Pound-Ounce, and Ounce.
- Tare
- Calibration with user defined calibration points and unit
- Configurable Overload, Division and Zero Tracking Range

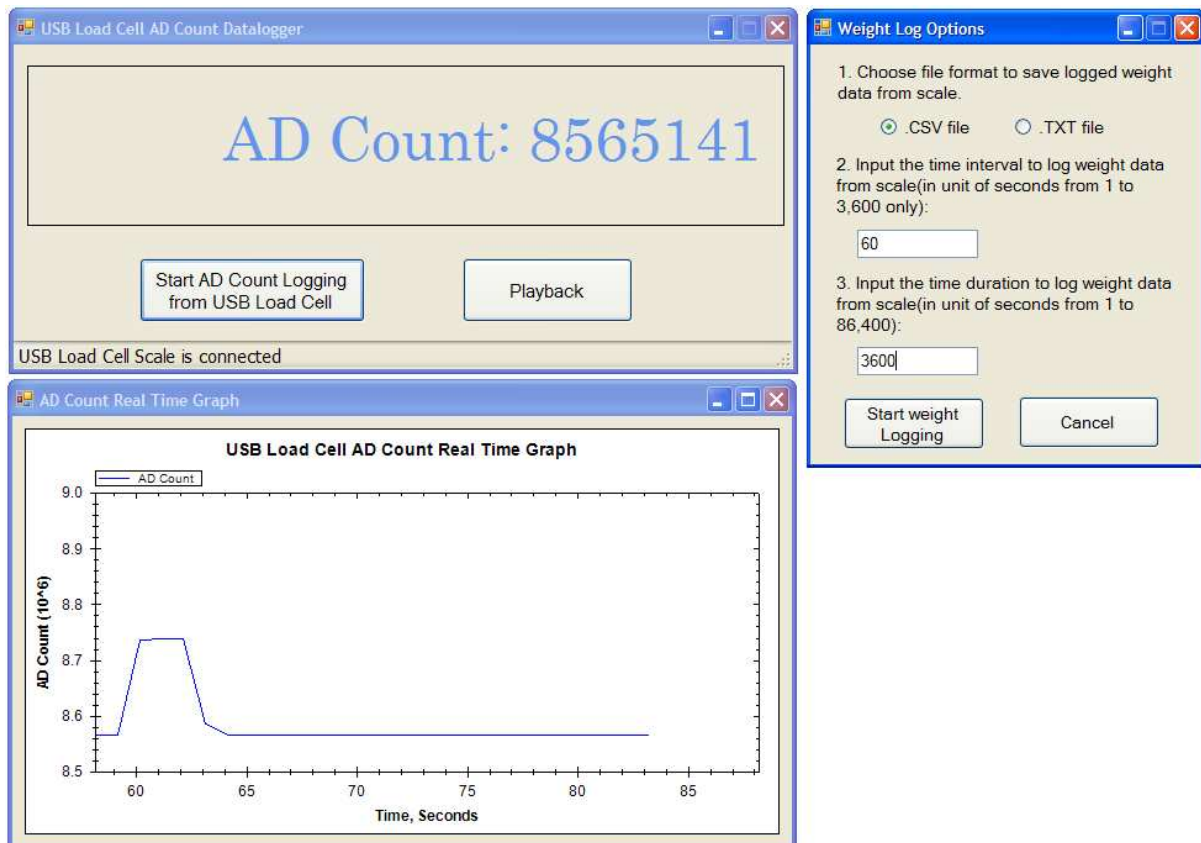






### USB Load Cell PC Program with Data Logger (Optional)

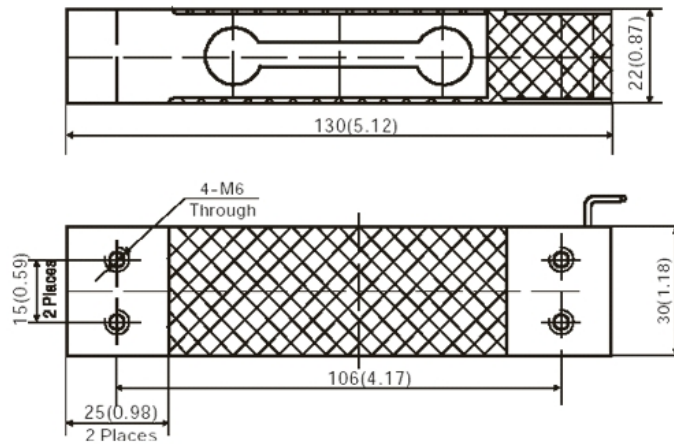
Optional data logger software to log Load Cell AD Count is also available. Data logging interval is between 1 to 3600 seconds and logging duration is between 1 to 86400 seconds. Output file is CSV or Text file.



## Load Cell Specifications

Capacity (kg)	5,15,30
Outline Size (mm)	130X30X22
Non-Linearity (%FS)	0.017
Hysteresis, Non-Repeatability (%FS)	0.01
Creep (%FS/30min)	0.015
Temperature effect on span (%FS/10°C)	0.014
Temperature effect on zero( %FS/10°C)	0.017
Temperature, compensated(°C)	-10-to +40
Temperature, operation(°C)	-35 to +65
Safe Overload(%FS)	150
Ultimate Overload(%FS)	300
Protection Class	IP65
Cable Length (m)	2

## Load Cell Outline Dimensions (mm)



## Calibration Weights (Optional Accessory)



The weight set has 25 weights of F1 quality. It is safely held in a fine box and includes an item to handle the small weights. Also available in M1 quality which is less expensive.

<b>WEIGHT (g)</b>	<b>CALIBRATION</b>	<b>WEIGHT (mg)</b>	<b>CALIBRATION</b>
-------------------	--------------------	--------------------	--------------------

	<b>DATA (mg dev from standard)</b>		<b>DATA (mg deviation from standard)</b>
1000	1.0	500	-0.01
500	0.3	200	0.03
200	-0.1	.200	0.03
.200	0.2	100	0.03
100	0.3	50	0.01
50	-0.1	20	0.01
20	-0.01	.20	1.01
.20	0.01	10	0.02
10	0.04	5	0.00
5	0.06	2	0.00
2	0.02	.2	0.00
.2	-0.02	1	0.01
1	0.02		

Contents